

LOOK WHAT WE
FOUND AT



Caragh 

NURSERIES

Autumn/Winter

Visit our New Webshop

Your go to place for specimen plants, trees & hedging. With lots of garden info & loads of ideas for your garden. See Page 2

Trees & Screens

Are you being overlooked or have a building or view that needs screening? We have the trees & screens to help. See Pages 9 & 10

Design & Consultancy

Let us guide you to create your own individual garden designed & planted just for you. See Page 13



CARAGH NURSERIES

We've always a fantastic stock of trees, plants, hedging and shrubs that we produce over our 55 acres in Co Kildare. We have a huge range of wonderfully large trees, specimens, plants, and shrubs that you won't find in your local garden centre and much more fun! So if you need a new design for your garden or to screen for privacy we are always here to help and we can deliver and plant too!

We're only 3 miles from the N7. From N7/M7 take Junction 10 (Naas south and Newbridge) and follow all signs to Mondello Park. Go through Caragh Village, past the church and next road on the left. Watch out for the signposts!



ADDRESS

Caragh Nurseries, Stickens, Caragh, Naas, Co. Kildare, Ireland

CONTACT US

Phone 045 879170
 Website caraghnurseries.ie
 Email jo@caraghnurseries.ie
ian@caraghnurseries.ie

OPENING HOURS

Mon to Fri 8am - 5pm
 Sat 9am - 5pm

There's lots of Information, competitions and offers on our social media pages:

 www.facebook.com/caraghnurseries

 www.twitter.com/caraghnurseries

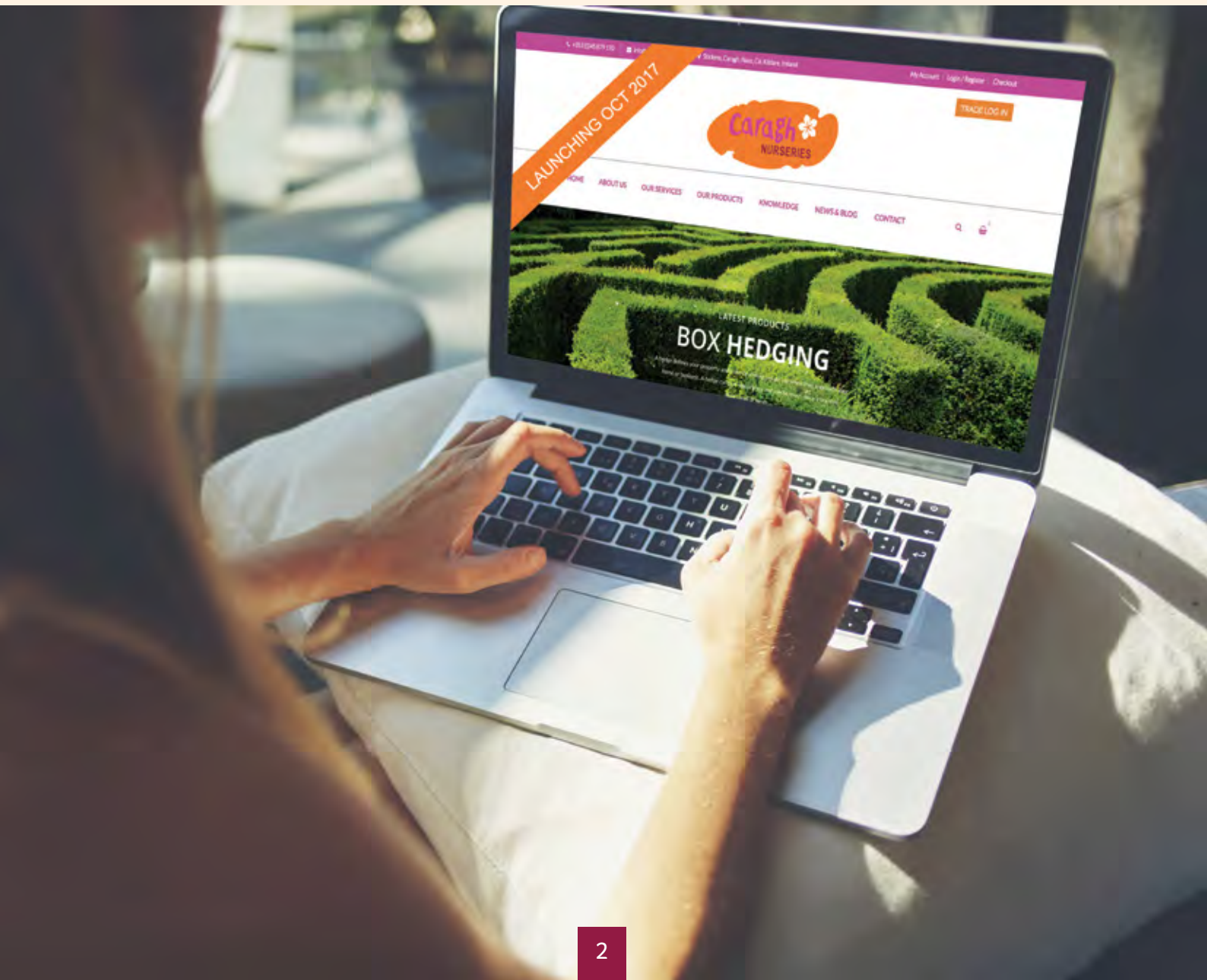
OUR WEBSHOP

Our new webshop is now live and although we know you loved the last website we think you will find the new one invaluable with much more information and now the ability to purchase your trees, plants and specimens online with better images and loads and loads of useful information and ideas of what to do in your garden, when and how.

We intend it to be your go to place for everything in the garden, You'll find us at the usual place [caragnurseries.ie](http://www.caragnurseries.ie)



Check out our NEW webshop @ www.caragnurseries.ie





Beech hedging
150-175cm
€7.50



Laurels
100-120cm
€15



Portugese
Laurels
60-80cm
€12.50



Whitethorn
60-90cm
70c



Photinia
Red Robin
100-125cm
€22



Inspirational Hedging



Buxus
hedging
30-40cm

€3

Garden Basics



We grow our hedging plants in huge quantities especially the most popular choices of evergreen and semi-evergreen varieties. We also grow our hedging in a wide range of sizes, we always have several thousand younger plants at a time from 2ft (60cm) but we also have options through the sizes and 3-4ft (90-120cm) is a very popular size as is the 5-6ft (150-175cm) and we usually have several sizes above this too. For guide purposes we have priced one size per variety to give a range of what we have but we do have many,many more and do check with us on planting distances as we ensure our hedging is as bushy as possible and what you may plant at 3 to the metre in one plant might only be 1 to the metre in another.



We have a huge range of specimen trees and plants in our Italian Collection that can create a Mediterranean feel to your garden from sculptured Box balls and shapes to espaliered and multistemmed trees. Olive trees, Wisteria and Agapanthus add colour to this contemporary collection. We work closely with our partner

Italian Collection

nursery in Tuscany to ensure that we not only have a large selection of specimens for maturity but that we always have access to the best quality of Italian stock regularly delivered to us to meet demand. To discover our Italian Collection or to make an appointment for our in-house design service contact Jo or Ian on 045 879170.





Olive Bonsai Form

Our Plants

How to Create Your Own Bella Vista



Italian Cypresses

150cm
300cm
450cm



Thuja Smaragd

150cm



Fruit Candelabra
Available in Apples & Pears

180cm



Olive Tree

25-30cm Girth (Shown)
30-35cm Girth



Yew Cone

210cm Tall



Agapanthus Blue & White

4L Pot



City gardens are usually smaller but often have the age old problem of being overlooked and striving for privacy. We have a range of solutions to this in plant and tree form that will respect your privacy while not blocking light and creating a beautiful outdoor garden too.

City Garden

The beauty of a smaller garden is you can really create a stunning but simple contemporary look like some of these ideas. We will happily assist you with your plant choices and design and can recommend hard landscapers and stone products and retailers.





Osmanthus Multistem
Evergreen Parachute Form

Our Plants



Get the look for less



1.5m Stem
with
2.5m Head

**Standard Yew
Tree with Cone
Shaped Head**



2.5m Tall

**Betula
Fastigiata Joes**



1.8m Stem
1.2m Head

**Standard
Magnolia
Susan Tree**



**Ligustrum
Multi Ball
Specimen**



1.5m Stem
1m Cube Head

**Photinia Red
Robin Standard
Cube**



3m Tall

**Acer
Palmatum FG1**



This page is proving to be a favourite and staple of the brochure as it is our most common request on calls to us, so much so that we now grow and supply a range of trees and hedging specially for this purpose.

Creating Privacy Naturally

We have a huge amount of experience in resolving the issues that surround privacy, blocking unsightly buildings and using trees and plants to soften all the views. Espalliered frames, evergreen trees and large formal hedging make great options.



Ian McGarry - Caragh Nurseries
 "Let us design your garden and resolve any issues around privacy for you. We have a range of solutions to suit your budget - just ask we're here to help."



Evergreen Jasmine Frame

2m Tall x
1.2m Wide
€360

Our Plants

Creating Privacy & Screening in Your Own Garden



Hornbeam
Espalier Tree

1.8m Stem
1.8 x 1.2m Head
€525



Elaeagnus
Espalier

3.2m Tall
x 1.5m Wide
Full Frame
€630



Evergreen Oak
Espalier Tree

1.8m Stem
with
1.8 x 1.2m Head
€600



Yew Cuboid

200cm x 60cm
x 60cm
€450



Portuguese
Laurel Hedging
Plant

40cm Tall
x 80cm Wide
€55



Photinia Red
Robin Espalier

2.4m High
x 1.2m Wide
€365

The Keadeen Hotel



Standing out in the crowd isn't as easy as it seems. Never one to sit back on their laurels, the owners of The Keadeen Hotel in Newbridge are very progressive, they have a beautiful hotel with a lovely warm feel about it but they are always looking at ways they can improve the place and over the last couple of years we have assisted Mrs O'Loughlin & her family with their gardens and outdoor space, first we re-designed the entrance & areas into the hotel and since then we have worked on various areas of the hotel. Earlier this year they asked me over to the hotel to discuss a new area of the hotel that was being developed, a new restaurant, The Bay Leaf which was going to open up an area of the hotel to create a better flow to the hotel and much more light and airiness and we had been asked to design and construct two courtyards with the same light & airy feel to mirror the interior.



We set about with our design and once that was in place and Rose and her family were happy with it we started on the next phase of assisting them with sourcing of all the stone, lighting & all the other aspects of the garden that needed to be organised before the planting starts, we have been involved in lots of projects so have a team of resources that we can recommend to the customer. Once the groundwork had been completed, the electrics and plumbing in place then it was time for the stone to go in, we picked an Italian porcelain tile for the courtyards,



Keep up with our current projects & how the gardens evolve on

 [facebook.com/caraghnurseries](https://www.facebook.com/caraghnurseries)

Hospitality

which would create a contemporary look and would also be stain resistant, we teamed this with a blue Mediterranean patterned tile for the surrounding bed walls, all sourced from Outhaus in Dublin. The gardens were really starting to take shape when the walls were painted white and the lighting went in.

Now all that was left was the planting, this is where we come into our own and our team of plant installation specialist took to work planting Olive trees, as focal pieces

on each of the courtyards, we had to work to cover several necessary downpipes with Italian Cypresses and then the softer planting, we are absolutely delighted with how the gardens look and so are the customers of The Keadeen, we have received lots of praise for the gardens. If you would like to discuss your business or hospitality gardens and how to stay ahead of the game then contact us on 045 879170 or 087 249 7908 and we'd be happy to discuss how we can help you.

Design & Planting

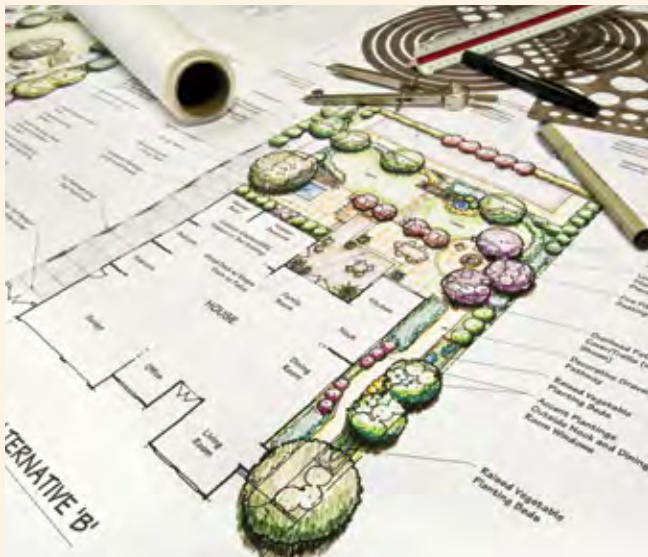
Caragh Nurseries team have a passion for trees, plants and good design. We offer a full design service in combination with garden planning and planting. We love to create and develop practical but innovative concepts for your outdoor space. We have a wide and varied knowledge about plants and their habitats along with practical knowledge of gardens and making the most of the space for you, that brought together ensures that you get the best garden possible for your needs.

We have confidently handled many challenging projects of various styles and sizes. We love to blow you away with our design ideas and advice to enhance the surroundings of your home or business. Caragh Nurseries deliver the highest standards in supply, design, and implementation of your garden.



STEP 1: Consultation €200 + VAT

Consultation process begins with either a visit to our nursery to pick out the kind of plants that you like and/or a visit to your garden or business to get an understanding of anything problematic, like screening and a feel for what style of garden will work for you. We understand the practicalities of gardens keeping maintenance to a minimum where necessary. This site visit is where we also take measurements and then follow up with our recommendations. This may be the only step necessary for you.



STEP 2: Design €650 + VAT

This service covers all of the above but we then meet with you with a full drawing plan of the garden designed and priced and including lighting, lawns, play areas and any hard landscaping, we discuss the options for 3rd parties to carry out any of these additional works.



STEP 3: Implementation & Management

This service is varied and depends on so many things but can be in conjunction with step 1 or step 2 and is a follow on service from the prices that you have been given. We generally plant the materials we provide but have a very successful reputation for project managing the designs we build, bringing in the professionals required for individual tasks, on time & to budget whilst ensuring standards are maintained and the finish is to the excellent standard that we demand, on both residential and the commercial projects we undertake, working in a similar way to an interior designer but outside!

Ian McGarry, Managing Director & Founder
You may find Ian doing anything around the nursery from watering plants to designing gardens, a wealth of knowledge and producer of amazing gardens. Father of four slightly wild children and married to Jo. You can contact Ian directly on **087 249 7908** or ian@caraghnurseries.ie



Jo McGarry, Sales & Marketing Director
Jo is the person at the other end of most of your emails, updating social media sites and preparing marketing material like this lovely brochure! Jo rarely gets a chance to get her hands dirty these days. Mum of four darling children and married to Ian for far too long! You can contact Jo directly on jo@caraghnurseries.ie



Tomasz Waszak, General Manager
Tomasz has been with Caragh Nurseries for over 10 years and has all the right elements of experience to offer the best advice to you on your garden and plant choices. He worked in production for the first 6 years, growing the trees and plants and now spends most of his time helping and advising customers and ensuring that the plants go out of the nursery at their best Tomasz has two children and has been married to Asia for 8 years. You can contact Tomasz directly on **087 942 2730** or info@caraghnurseries.ie



David Hearne, Operations Manager
David is from Naas and is critical to ensuring that the plants reach you in the condition they should, he coordinates and oversees all deliveries and manages all planting projects. David has 7 years experience so don't be afraid to ask for his advice - he will be delighted to offer suggestions on your plants and soil and how to get the best out of them. You can contact David directly on **087 921 6844**



Igoris Prociuk
Igoris works in the fields with Tom ensuring all the field production is top quality and the trees are planted, caned and clipped to make the best possible trees and hedging materials. He also prepares plants for dispatch and is the undertaker of the more physical work around the nursery. He is a Lithuanian national and has worked in Ireland for a number of years and is a highly valued member of the team at Caragh Nurseries.



Patrick Fitzpatrick
Patrick came to us as an intern but is now a fully fledged member of the team, becoming the master of many trades and can be seen out planting trees in gardens, ensuring the plant quality prior to going out and has been involved in the planting of most of our recent hotel projects. Our clients are always delighted with his dedication to the gardens and he is always last to leave ensuring that everything is perfect.



Sean Conway
Sean Conway is in charge of our smaller stock production his experience is mainly in agriculture but has taken the switch to horticulture over the last 4 years in his stride and loves nothing more than to advise customers on their plant choices. He is usually found in the glasshouses and tunnels propagating plants and ensuring that we have a steady supply of plants and hedging ready when you need them.





LOOK WHAT WE
FOUND AT



Caragh 

NURSERIES

Caragh Nurseries, Stickens, Caragh, Naas, Co. Kildare, Ireland
Phone: 045 879170 email: jo@caraghnurseries.ie